



Press Release

22 September 2018

**MPRL E&P Announces Fifth Gas Discovery in
Myanmar Offshore Block A-6**

MPRL E&P Pte Ltd. ("MPRL E&P"), the only independent upstream energy company led by Myanmar nationals operating in both the onshore and offshore regions of Myanmar, and the PSC Operator of Block A-6, is pleased to announce that appraisal well *Shwe Yee Htun-2* has been successfully drilled with formation evaluation results indicating a gas column and net pay thickness that substantially exceeds prior expectations.

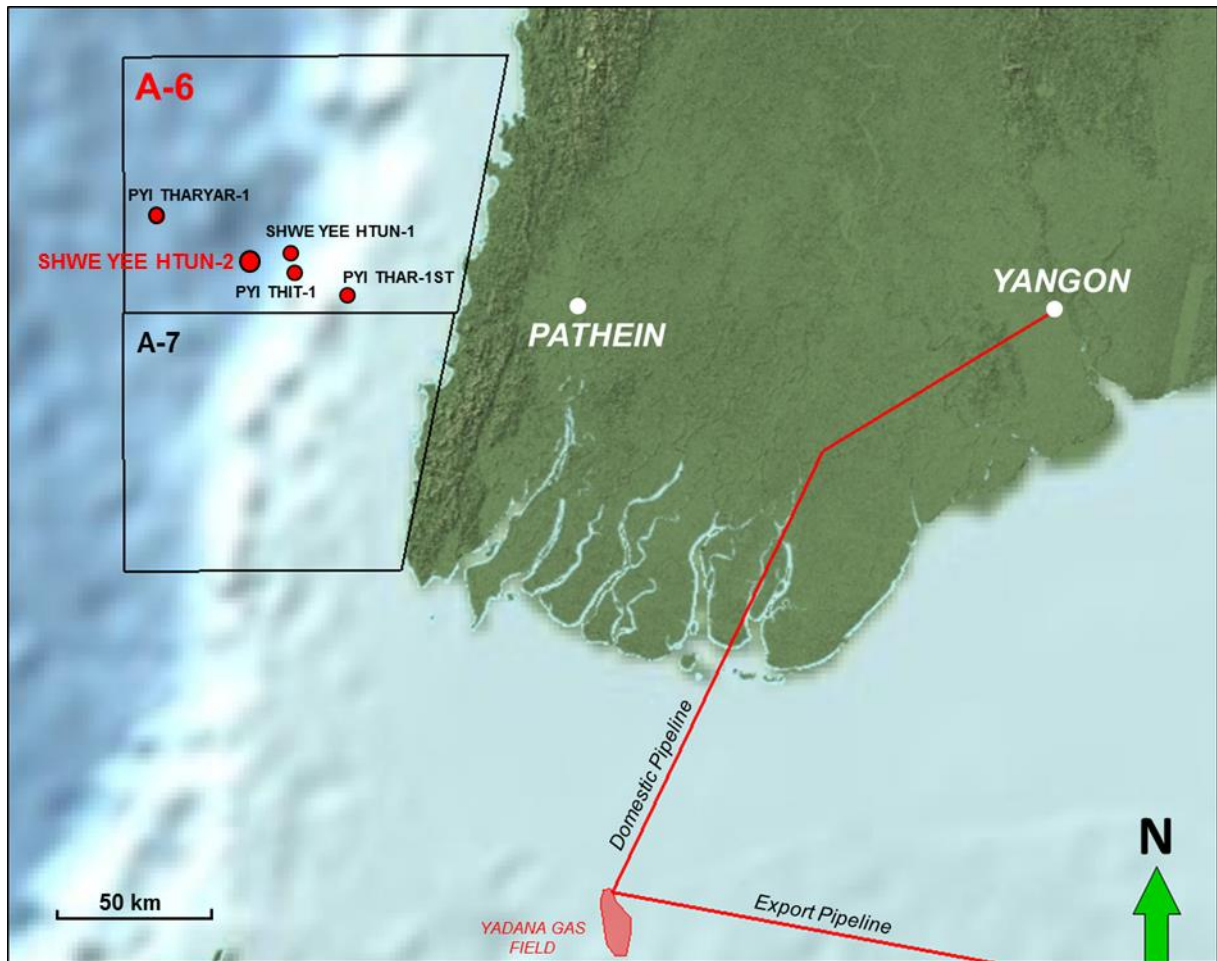
This equates to a track record amounting to 100% success with five gas discoveries achieved in five wells drilled in Myanmar offshore Block A-6.

Shwe Yee Htun-2 was spudded on 20 July 2018 and reached a total depth of 15,912 feet (4,850 meters Measured Depth) in water depth of 7,628 feet (2,325 meters) measured from the rotary table. Wireline formation evaluation including pressure measurements demonstrates that the reservoir is highly likely to be in pressure communication with the 2016 *Shwe Yee Htun-1* discovery, which is approximately 10 km east of the current drilling location. The minimum total gross gas column based on wireline pressure data from both wells is now estimated to be approximately **787 feet (240 meters)**. Wireline formation evaluation also indicates that *Shwe Yee Htun-2* encountered **131 feet (40 meters)** of net gas pay.

Conventional core has also been acquired as a part of the comprehensive *Shwe Yee Htun-2* formation evaluation program. **As of 22 September 2018, drill stem test results indicate *Shwe Yee Htun-2* achieving a flow rate of 50 million standard cubic feet per day of gas limited by testing equipment through a 40/64" choke. The well is now being plugged and abandoned as planned.**

Chief Executive Officer U Moe Myint said: "I am very pleased to announce our fifth gas discovery in Block A-6 and wish to recognize our technical joint operator Woodside's planning and operations teams for continuing to maintain their world-class operational performance record with regard to safety. Our back-to-back ultra-deep water drilling campaigns in Block A-6 reinforces MPRL E&P's commitment towards unlocking the energy resources necessary to drive further progress in Myanmar; energy resources that are necessary to meet the rapidly growing energy demand not only in our country but also in the Asia Pacific region. I also wish to extend MPRL E&P's commitment to our project stakeholders that we will continue to endeavor to achieve the nation's first commercially viable ultra-deep water gas development project as quickly as possible."

MAP SHOWING THE LOCATION OF *BLOCKS A-6* GAS DISCOVERIES



All media enquiries to be addressed to:

U Tint Swe
Executive Director
Government & Public Affairs
MPRL E&P Group of Companies

Email: tint.swe@mprlexp.com
Tel: +95 1 230 7733

* * *



Flaring Gas from Shwe Yee Htun-2





Flaring Gas from Shwe Yee Htun-2

